

ibi systems iris

# Installation Update

## 22/R1

*Date: 27.04.2022*

Intern | Internal



systems

ibi systems GmbH  
Rudolf-Vogt-Straße 6  
93053 Regensburg  
[www.ibi-systems.de](http://www.ibi-systems.de)

## Contents

1	Introduction .....	3
2	Prerequisites .....	3
3	Preparation.....	3
4	.NET Core Hosting Bundle .....	3
5	Configuration change when using SAML2 authentication .....	4
6	Application Pool .....	4
7	Configuration Files.....	4
8	Application Files.....	5
9	Database update and final steps.....	5

## 1 Introduction

This document describes the process of updating the software *ibi systems iris 22/R1*. Alongside this document, the update ZIP package contains the following folder structure:

- Application\
- Database\ (optional, if there are any customer specific database scripts)

## 2 Prerequisites

Only the *iris* version **21/R2 or higher** can be updated to **22/R1** with the current installation package.

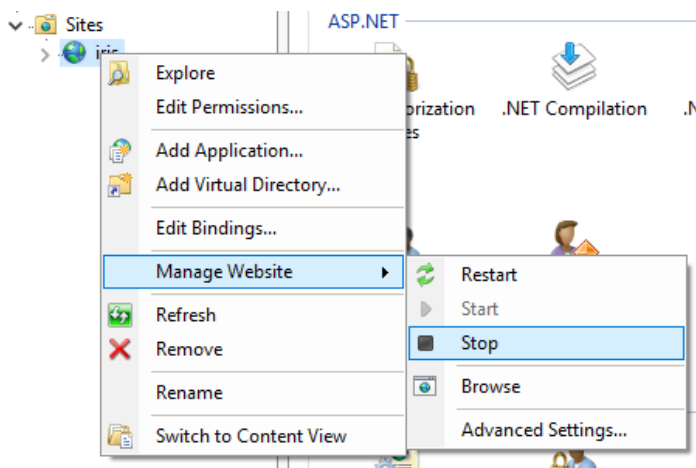
## 3 Preparation

**Important:** Back up the following items before installing the update:

- Database
- Website folder (e.g. C:\inetpub\wwwroot\iris)
- iris files (e.g. D:\iris)

Please check the subfolder *Queue* in your iris files (e.g. D:\iris\Queue) for existing JSON files. Continue with the installation when all files were processed and deleted by the application.

Next, the current iris website must be stopped. With a right click on the corresponding website, shown in *IIS Manager*, the context menu will appear. With the option *Manage Website* and *Stop*, the website will be stopped immediately:



It is also recommended to stop the application's application pool. This can also be achieved in the IIS Manager in the corresponding *Application Pools* submenu by right-clicking on the name in the context menu via the *Stop* menu item.

## 4 .NET Core Hosting Bundle

From version 22/R1, iris requires an installed .NET Core Hosting Bundle in version 6.0.x (instead of the previous .NET Framework 4.8). You can find a direct link to download the latest installation package on the following page: <https://docs.microsoft.com/en-us/aspnet/core/host-and-deploy/iis/hosting-bundle?view=aspnetcore-6.0> (Sub-item *Direct Download (current version)*). It may be necessary to restart the server after installation.

## 5 Configuration change when using SAML2 authentication

If you use SAML2 authentication (e.g. via okta) to run ibi systems iris, a small configuration change in the SAML settings of the provider used will be necessary from release 22/R1. The action of the *Single Sign On*, *Recipient* and *Destination URLs* is now called *Acs* (instead of *AcsService*), e.g.:

<https://iris.company.local/Admin/SamlAuthentication/Acs>

### SAML Settings Edit

**GENERAL**

Single Sign On URL	<a href="https://iris.company.local/Admin/SamlAuthentication/Acs">https://iris.company.local/Admin/SamlAuthentication/Acs</a>
Recipient URL	<a href="https://iris.company.local/Admin/SamlAuthentication/Acs">https://iris.company.local/Admin/SamlAuthentication/Acs</a>
Destination URL	<a href="https://iris.company.local/Admin/SamlAuthentication/Acs">https://iris.company.local/Admin/SamlAuthentication/Acs</a>

## 6 Application Pool

Due to the switch to .NET Core, the *.NET CLR version* of the application pool in the IIS manager (*Application Pools* menu item, *Basic Settings* in context menu) can be adjusted to the value "No managed code" (previous value : *.NET CLR Version v4.0.x*):

### Edit Application Pool

Name:

.NET CLR version:

Managed pipeline mode:

Start application pool immediately

## 7 Configuration Files

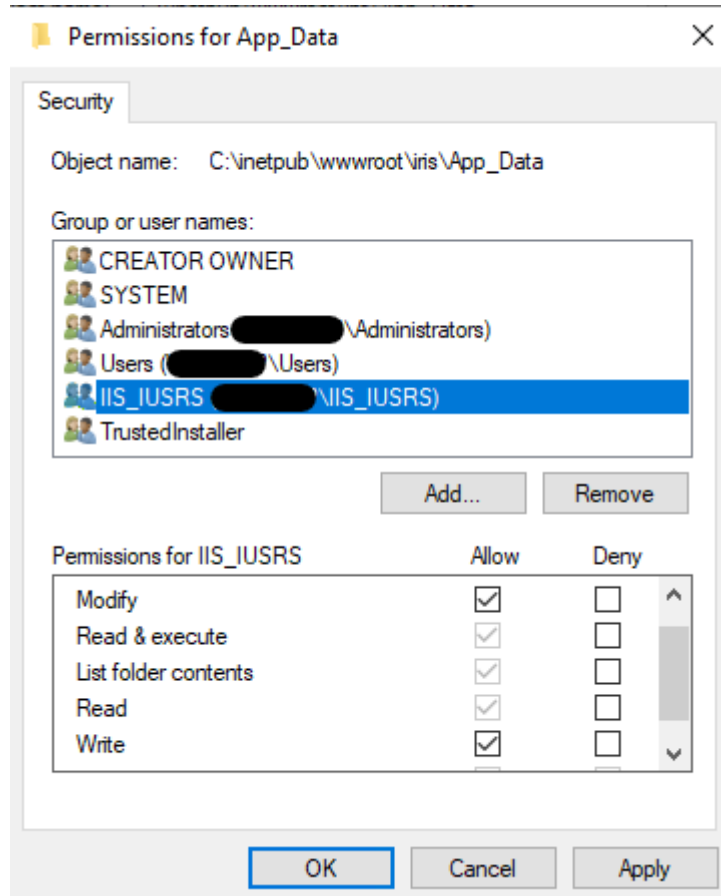
When individual amendments to any configuration files are necessary, these amendments must be completed in the application's sub folder *Config*: i.e. Database connection string in *ConnectionStrings.config*.

## 8 Application Files

Delete the current content of the program folder for the *iris* IIS website: i.e. C:\inetpub\wwwroot\grcsuitewebsite. When empty, copy the new *iris* website application files into the *iris* website folder from the installation package folder *Application*.

To be able to use the new automatic update feature for reports and dashboard layouts, the user behind *iris* website's application pool (default: user group *IIS\_USERS*) requires "Write" and "Modify" permissions for the folder *App\_Data* in the *iris* application files.

The permissions can be set as usual using Windows Explorer:



## 9 Database update and final steps

Once the application files have been replaced, restart the application pool and the website in *IIS Manager*. Navigate to the following URL in your browser to execute or download the database update script:

<https://server.your-domain.de/Admin/SoftwareUpdate/Install>

The application redirects you to the right page depending on your configuration. Follow the instructions on the screen to finish the update.

In some cases, when restarting the application after the database update, an error page appears stating that the application could not be started. In this case, it should help to end and restart the application pool and application again using the *IIS Manager*. Please note that the first start of the application after the update can take a few minutes, among other things due to the import of the current reports and dashboards.